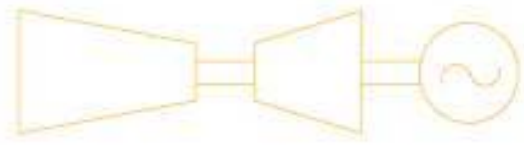
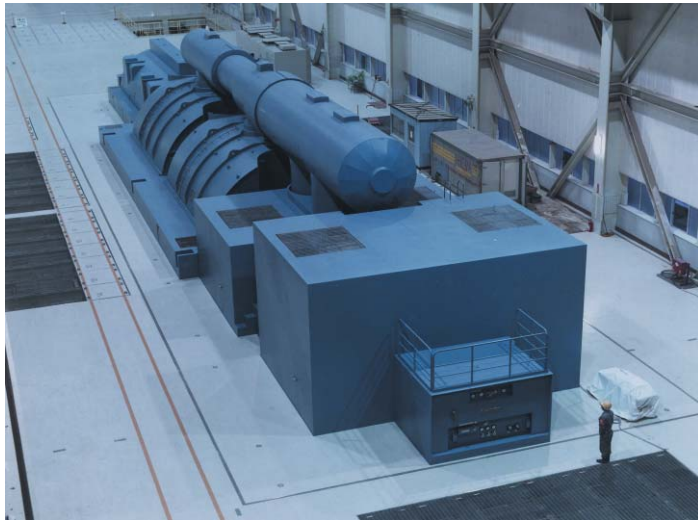


Steam Turbine



HITACHI POWER SYSTEMS AMERICA, LTD.



This is one example of Hitachi's world-class turbine technology. Hitachi has commissioned over 30 supercritical pressure units in the 350-1050MW size range since 1967.

Hekinan #2

Plant Name:	Hekinan #2
Plant Location:	Aichi, Japan
Customer:	The Chubu Electric Power Co., Inc., Japan
Rated Output / Gen Capacity:	700 MW / 800 MVA
Turbine Type:	Tandem-compound, Four-flow Exhaust, Reheat, Condensing
Last Stage Blade Length (inches):	40
Speed (rpm):	3600
Inlet Steam Conditions:	3500 psig / 1000° F / 1050° F
Turbine Back Pressure:	1.50 inch Hga
Commercial Operation:	1992



HITACHI POWER SYSTEMS AMERICA, LTD.

Hitachi Power Systems America, Ltd.
645 Martinsville Road
Basking Ridge, NJ 07920
(P) 908-605-2800
(F) 908-604-6211
power.info@hal.hitachi.com

Power Generation Products

Pulverized Coal Boiler
Combined Cycle/Cogeneration Systems
Gas Turbines
Heat Recovery Steam Generators (HRSGs)
Steam Turbines
Generators
SCR Systems
Hydro-Electric Generating Systems

Power Transmission

Substation Equipment
Switchgear
Transformers

www.hitachi.us/hpsa

HITACHI
Inspire the Next